

Document Number: 130211JL-1	Originator: Jon Landau	Date: Mar 3rd, 2014
-----------------------------	------------------------	---------------------

Data Sheet
900-0650-00
PG1000UPS-48



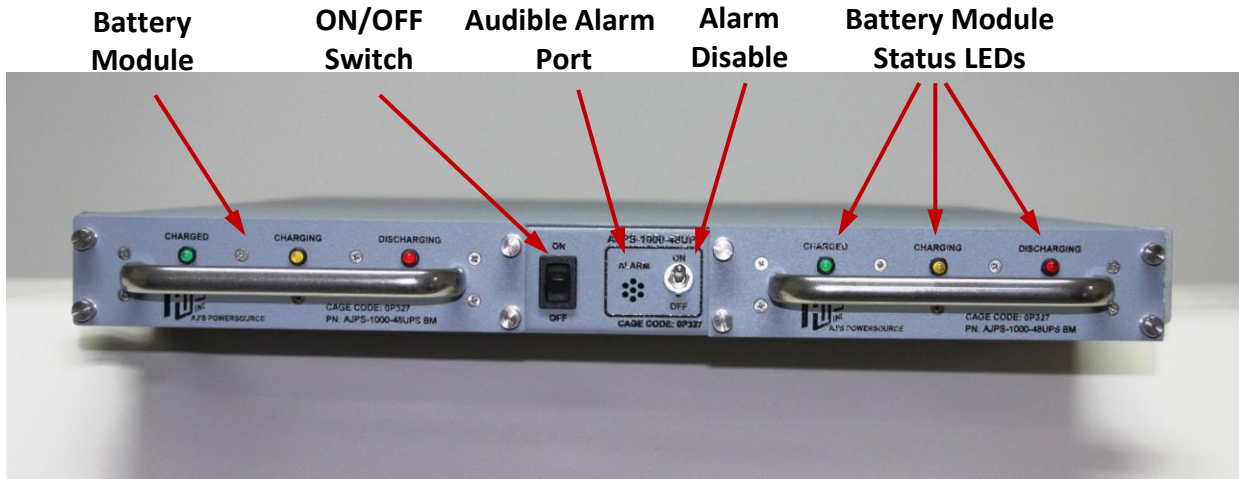
Ruggedized UPS System

Document Number: 130211JL-1	Originator: / Sign:	Approved By: / Sign:
-----------------------------	---------------------	----------------------

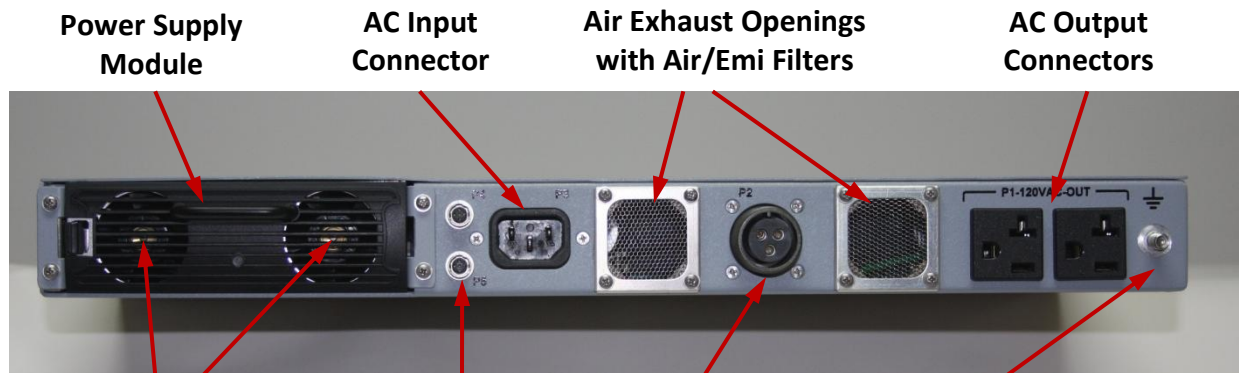
Warning: This document may contain technical data whose export is restricted by the Arms Export Control Act (Title 22, U.S.C. Sec 2751, et seq.) or the Export Administration Act of 1979, as amended (Title 50, U.S.C., app. 2401 et seq.) Violators of these export laws are subject to severe criminal penalties.
 Proprietary Data: The data disclosed in this document was originated in whole or in part by AJPS Inc. and is to be utilized only for the specific purposes for which it was supplied. It is not to be disclosed, transmitted or reproduced without the prior written consent of AJPS Inc.

SPECIFICATION	VALUE	UNITS
AC Output		
Rated Voltage	120 Pure Sine Wave ($\pm 5\%$) (230 Pure Sine Wave Optional)	Volts
Frequency	60 ($\pm 0.25\%$) (50 Hz Optional)	Hertz
Rated Max. Current	8.3 @ 120V	Amps
Max. Rated Power (1U to 4U Stackable)	1000 - 4000	Watts
Maximum VA (1U to 4U Stackable)	1000 - 4000	VA
Phase	Single	
Total Harmonic Distortion	<1 (w/resistive load)	%
Run Time on Battery	>15 (@ 25C, 80% Load, de-rated below 10C)	Minutes
Transfer Time to Battery	Instant, On-Line conversion	
AC Input		
Voltage Range	100 – 264	Volts AC
Nominal Voltage	115/230	Volts AC
Frequency Range	47 – 63, 100-264Vac, 393-407 115Vac	Hertz
Nominal Current	12 @ 115V / 6 @ 230V	Amps AC
Inrush Current (typical)	50	Amps AC
Power Factor (typical)	>0.98 @ 115Vac / >0.95 @ 230Vac (Full Load)	
Leakage Current	<3 @ 230VAC	mAmps AC
Efficiency (typical)	≥ 80 @ 120VAC	%
Conversion	Double, On-Line	
Internal Battery		
Rating	48 (two battery modules in Parallel)	Vdc
Type	Lithium Iron Phosphate	
Hot-Swappable	Yes, during primary AC input power	
Replacement Time	Less than one minute	
Recharge Time	5 Hours to 95% after full discharge	
Front Panel Indicators		
Battery Status	Green=Charged, Yellow=Charging, Red=Discharging	
Switch LED	Green=Unit On	

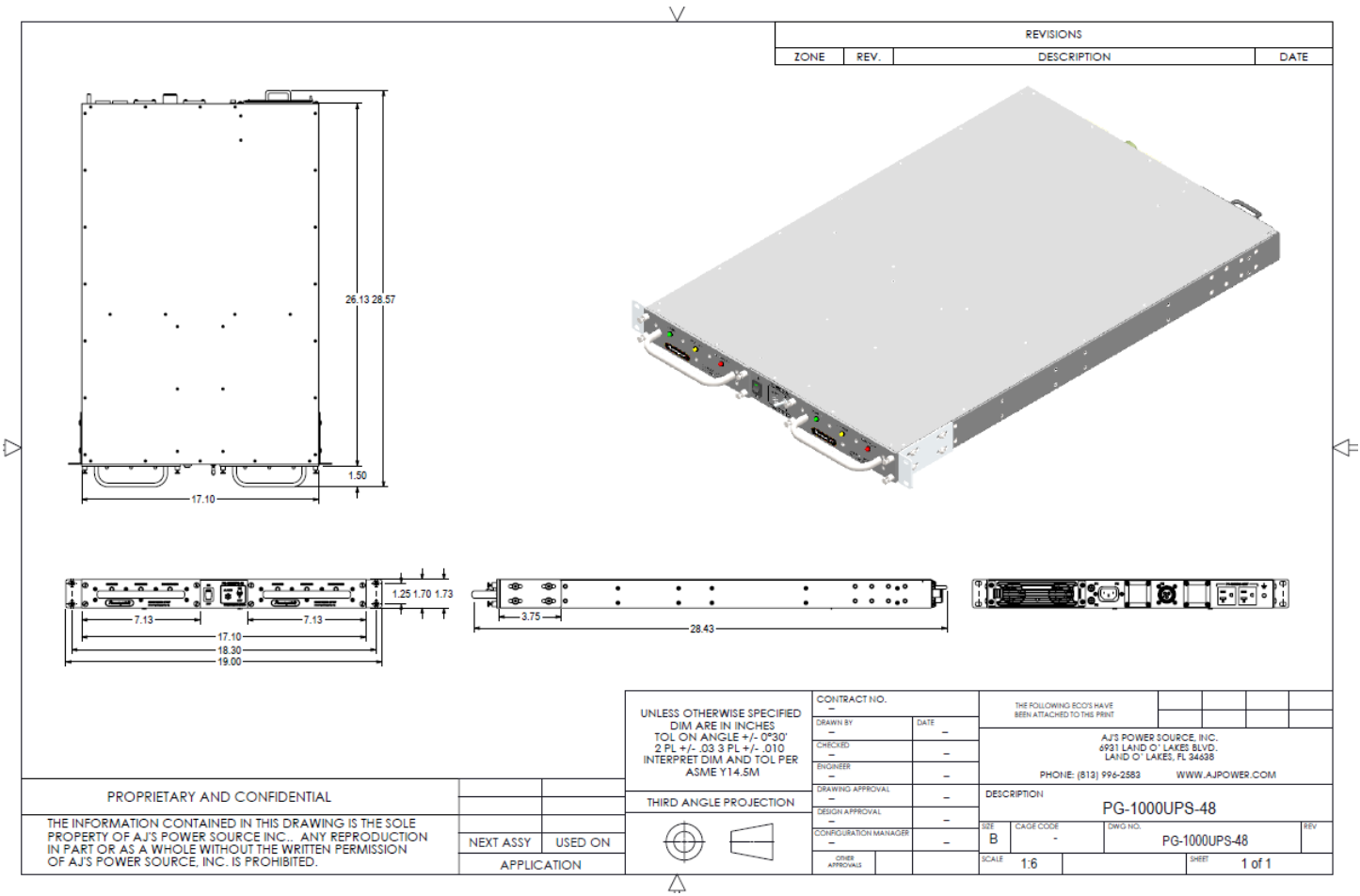
SPECIFICATION	VALUE	UNITS
Front Panel Control		
Alarm Switch	Disables alarm sounder	
On/Off Switch	When On, enables UPS output	
Rear Connectors		
AC Input	Male IEC320/C14	P3
AC Input Power Cord	AJPS-PIC-6F (IEC320/C13 to NEMA 5-15P)	
AC Output	2 x NEMA 5-20R receptacles	P1
AC Load Share Connector	MS3102A16-10S, Pin A=Line, Pin B=Ground, Pin C=Neut.	P2
Load Share Sync Connectors	Load Share Sync connectors (cable supplied with unit)	P4 & P5
Protection		
Over Load	Yes	
Output Short Circuit	Yes	
Over Temperature	Yes	
AC Input Protection	Yes	
Isolation		
AC Input to AC Output	Yes, Double	
Environmental		
Operating Temperature Range	-20 to +54 (75% Load Derating from 50 to 54)	°C
Storage Temperature Range	-40 to +70	°C
Operating Humidity	95 non-condensing	%
Altitude	10, 000 (Operating) / 40,000 (Non-Operating)	feet
Fungus	No fungus promoting materials used	
Sand and Dust	MIL-STD-810G* (w/Filters)	
Vibration	MIL-STD-810G*	
Functional Shock	MIL-STD-810G*	
* Designed to meet, lab testing required.		
Physical Properties		
Dimensions	1.735H x 17.1W x 26D (Fits 24" Rack Depth)	inches
Mounting	1U Size for 19 Inch Rack (adjustable from 24"-26" Rack Depth)	
Weight	30	lbs.
Material	Aluminum	
Color/Finish	Gray Light Texture (Other colors are optional)	
Other Specifications		
Startup Time	<30	Seconds
MTBF	111,000 (Calculated per MIL-HDBK-217)	Hours



Front View



Rear View



Mechanical Drawing